



This flier was compiled with information sourced from: Propagating food crops in Papua New Guinea, (TOT Training Manual); and LAL002 Taro Mini-sett Information (NARI Toktok Series) .



OUR CONTACT

The Information Centre
Sir Alkan Tololo Research Centre
National Agricultural Research Institute
P.O. Box 4415, LAE

Phone: 478 4000

Fax: 475 1232

Email: naripng@nari.org.pg

Website: www.nari.org.pg



PAPUA NEW GUINEA
NATIONAL AGRICULTURAL RESEARCH INSTITUTE

Taro Mini-sett

A rapid seed multiplication technique to get more planting materials from a single corm



*Building climate resilient agricultural communities
in Papua New Guinea*

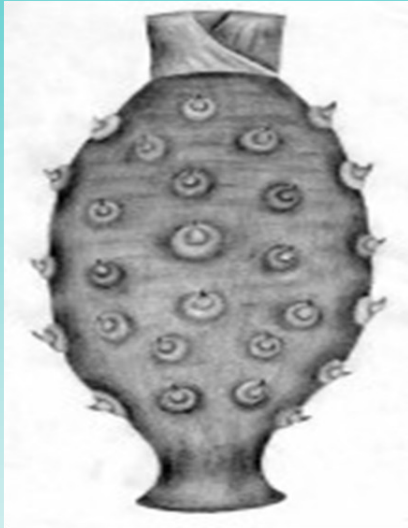


*Developed for a EU funded Action in Support of
Smallholder Agriculture for Climate Change
Adaptation*

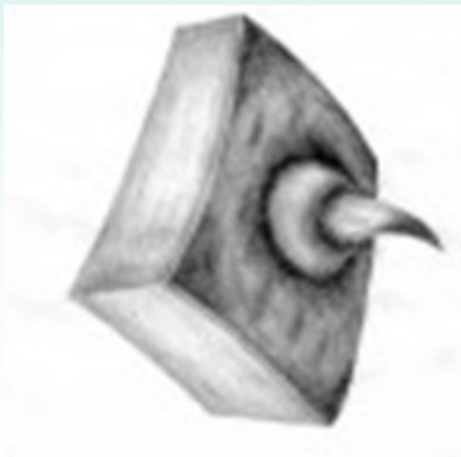
What is taro mini-sett?

Taro mini-sets are cut pieces of taro corm, or the under ground part of taro that has buds or eyes.

Taro Corm



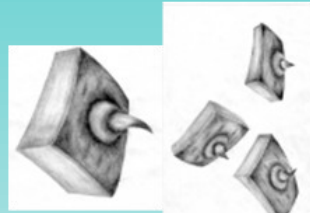
Taro Mini-sett



Preparation of Taro Mini-sets as Planting Material

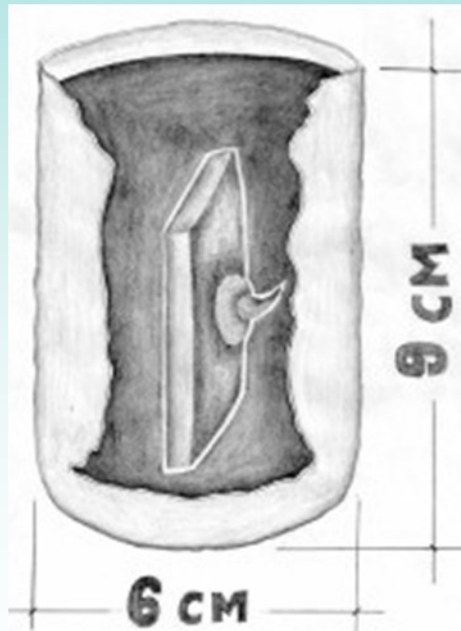
To prepare taro mini-sett, uproot mature taro plant and remove the top, and gently clean the corm.

Cut the corm into pieces containing buds or eyes.



Treat the cut sides of each mini-sett with wood ash and place the treated sides facing upwards under shade to dry over night before potting.

Soil Preparation for Planting of Mini-sets (in polythene bag)



Collect black topsoil and fill up polythene bag (size 6 cm x 9 cm) with soil as shown in the diagram..

Place each mini-sett in a polythene bag with the bud facing in an upright position, then cover with soil and water.

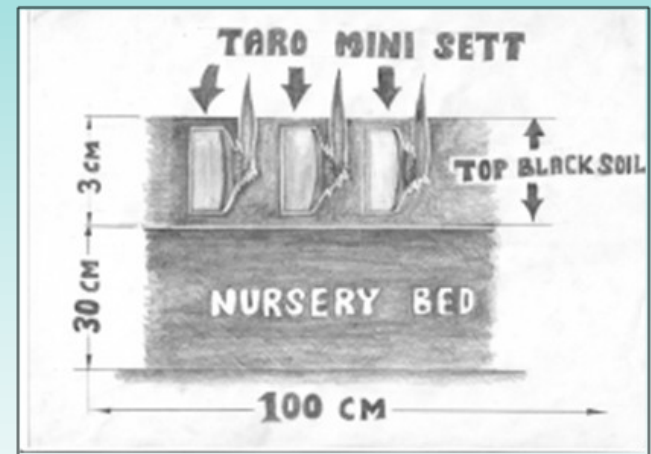
Mini-sett Planted in Polythene bag

Water the planted mini-sets three times a week and ensure the soil stays moist.

Soil Preparation for Planting of Mini-sets in Nursery Beds

Prepare a well drained nursery bed 100 cm long and 30 cm high.

Make furrows and place taro mini-sets side by side close together as shown in the picture below:



Cover the mini-sets with topsoil and water.

Note:

The advantage of taro mini-sett technique is that a lot of taro planting materials can be produced at one time. One medium size taro corm (20 cm x 6 cm) can easily produce 6-8 mini-sets.