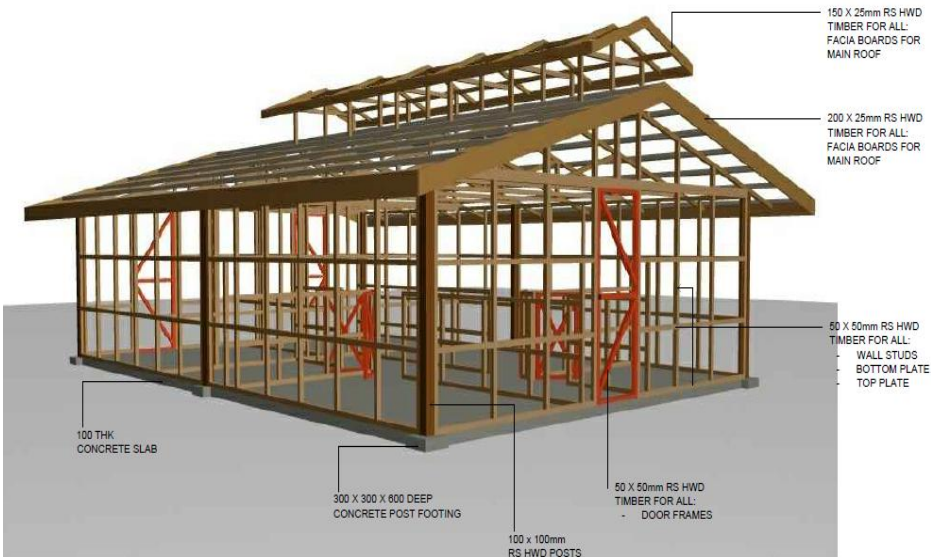
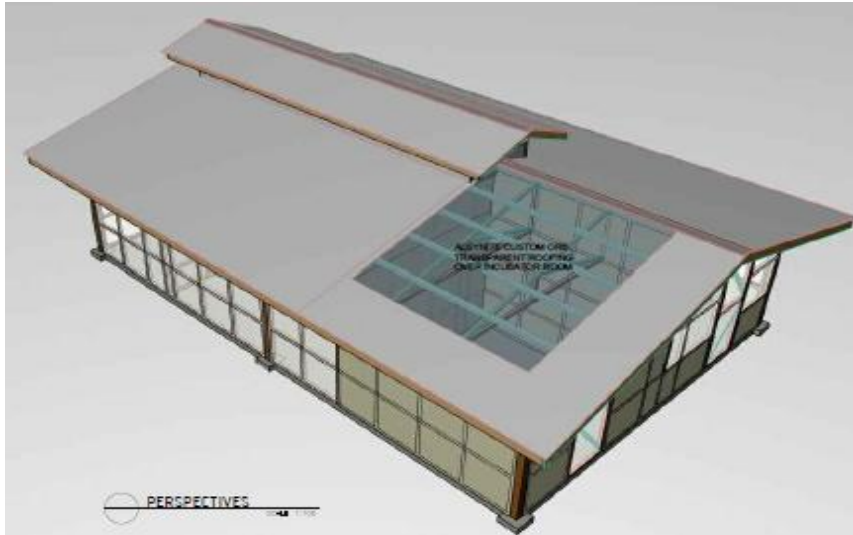


PROTO-TYPE RURAL POULTRY HATCHERY and ESTIMATED COSTS



				AMOUNT
1	ROUGH SAWN TIMBER (SAWMILL HIRE)			13,621.30
2	HARDWARE MATERIALS			6,052.07
3	WATER TANK & CONNECTIONS			4,869.04
	TOTAL MATERIAL COSTS			24,542.41
4	FREIGHT Estimated @ 40% of material costs			
	SUB TOTAL (including GST)			26,853.85
	Labour			2,552.00
	GRAND TOTAL			29,405.85